

Component Replacement

- electrical -



Xperia™ XZ1
G8341, G8342 (Dual SIM), G8343

CONTENTS

1	Replaceable Components	3
2	Tools	5
3	Component Placing.....	7
4	Additional Repair Info	9
5	Revision History	15

For general information about electrical repair related issues, refer to 1220-1336: Generic Repair Manual - electrical -. (RE4252)

Baking prior to repair is required, if the board have been exposed to air more than 12 hours from PWB package opening. Too long exposure time increase the level of moisture in PWB and the PWB could delaminate during repair process and result in direct or latent failures and reduce reliability.

The boards shall be baked in 125°C ±5°C for 4 hours.

All Electrical components are RLC (Reversed Logistic Classification) level C, refer to the 3.4 Valid Spare Parts chapter in the Warranty Claim Instruction RE4249 about disposition of the parts.

Test after component replacement to refer to the 1312-2140 Test Instructions.

Do not remove shield can lids (RF performance will be damaged).

If there are components located on right next to the component that intend to replace, protect those components with Kapton tape to avoid damages.

1 Replaceable Components

EXPLANATION OF ABBREVIATIONS USED IN THE COLUMN 'COMMENTS' BELOW

REPAIR METHOD

HA = Hot Air (removal & mounting)

ST = Soldering Tool (removal & mounting)

HA/ST = Hot Air for removal - Soldering Tool for mounting

BGA = BGA Station

BH = Bottom Heater

ADDITIONAL INFORMATION

⇒1 (2, 3, 4, etc.) = Proceed to 'Additional Repair Info' for further instructions in the indicated section(s).

Primary Side

Position	Component	Part no.	Comments
CN1300	Conn BtB Plug 4p HIROSE/BM22	1281-9973	S HA+BH⇒1
CN2201	Conn BtB Receptacle 20p I-PEX	1306-0093	S HA+BH⇒2
CN4000	Card Conn SIM 2 in 1	1304-3910	S HA+BH or BGA⇒3
CN4001	Card Conn SIM	1305-0317	S HA+BH or BGA⇒3
CN4455	Conn Leaf Spring Plug 1p WH : 2.2+-0.2	1295-7077	S HA+BH⇒4
CN4457	Conn Leaf Spring Plug 1p WH : 2.2+-0.2	1295-7077	S HA+BH⇒5 Only G8343
CN4651	Conn Leaf Spring 1p WH:1.8+-0.2	1306-4808	S HA+BH⇒6
CN4653	Conn Leaf Spring 1p WH:1.8+-0.2	1306-4808	S HA+BH⇒7
CN4654	Conn Leaf Spring 1p WH:1.8+-0.2	1306-4808	S HA+BH⇒7
CN4655	Conn Leaf Spring Plug 1p WH : 2.2+-0.2	1295-7077	S HA+BH⇒8
CN4868	Conn Leaf Spring Plug 1p WH : 0.8+-0.2	1294-8905	S HA+BH⇒2
CN4872	Conn Leaf Spring Plug 1p WH : 0.8+-0.2	1294-8905	S HA+BH⇒7
CN7000	Conn BtB Receptacle 40p IPEX NOVASTACK V	1298-2647	S HA+BH⇒9
CN9500	Conn BtB Receptacle 40p IPEX NOVASTACK V	1298-2647	S HA+BH⇒10
CN9503	Conn BtB Receptacle 10p FUJIKURA BB35	1306-7941	S HA+BH⇒11
D7601	LED FULL-COLOR 1.6x1.6x0.35mm	1268-3829	S HA+BH⇒8
MC3001	Mic 3.5 Silicon	1306-8995	S HA+BH⇒4
MC3002	Mic 0.0 Silicon	1306-8997	S HA+BH⇒6

*CN4457 is for G8343 only.

Replaceable Components

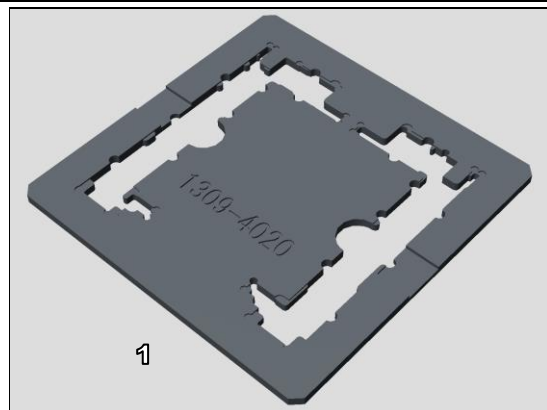
Secondary Side

Position	Component	Part no.	Comments
CN2671	Conn Leaf Spring Plug 1p WH : 1.6+-0.2	1297-5833	S HA+BH⇒1
CN4402	Conn Coax Receptacle 1p	1261-3585	S HA+BH⇒2
CN4452	Conn Leaf Spring Plug 1p WH : 1.6+-0.2	1297-5833	S HA+BH⇒1
CN4456	Conn Leaf Spring Plug 1p WH : 1.6+-0.2	1297-5833	S HA+BH⇒1
CN4641	Conn Leaf Spring Plug 1p WH : 1.4+-0.2	1294-8163	S HA+BH⇒3
CN4642	Conn Leaf Spring Plug 1p WH : 1.6+-0.2	1297-5833	S HA+BH⇒3
CN4656	Conn Leaf Spring Plug 1p WH : 1.6+-0.2	1297-5833	S HA+BH⇒4
CN4863	Conn Leaf Spring Plug 1p WH : 0.8+-0.2	1294-8905	S HA+BH⇒2
CN4865	Conn Leaf Spring Plug 1p WH : 1.6+-0.2	1297-5833	S HA+BH⇒5
CN4869	Conn Leaf Spring Plug 1p WH : 1.6+-0.2	1297-5833	S HA+BH⇒6
CN4870	Conn Leaf Spring Plug 1p WH : 1.6+-0.2	1297-5833	S HA+BH⇒7
CN4871	Conn Coax Receptacle 1p Mount Clip	1287-4587	S HA+BH⇒8
CN7300	Conn BtB Receptacle 34p DDK BB35	1293-6188	S HA+BH⇒9
CN7301	Conn BtB Receptacle 34p DDK BB35	1293-6188	S HA+BH⇒10
CN8000	Conn Leaf Spring Plug 1p WH : 1.4+-0.2	1294-8163	S HA+BH⇒4
CN8001	Conn Leaf Spring Plug 1p WH : 1.6+-0.2	1297-5833	S HA+BH⇒4
CN8041	Conn Leaf Spring Plug 1p WH : 1.4+-0.2	1294-8163	S HA+BH⇒7
CN8042	Conn Leaf Spring Plug 1p WH : 1.6+-0.2	1297-5833	S HA+BH⇒7
CN8650	Conn Leaf Spring 1p WH:1.8+-0.2	1306-4808	S HA+BH⇒11
CN8651	Conn Leaf Spring 1p WH:1.8+-0.2	1306-4808	S HA+BH⇒11
D7800	LED White	1304-1661	S HA+BH⇒10

2 Tools

SPECIAL TOOL

1. PBA Soldering Fixture (1309-4020)



STANDARD TOOLS

1. Small Convection (Hot Air) Device



2. Soldering Iron



3. Soldering wick



Tools

4. Solder-wire



5. Solder-paste



6. Low Static Heat Protection Tape



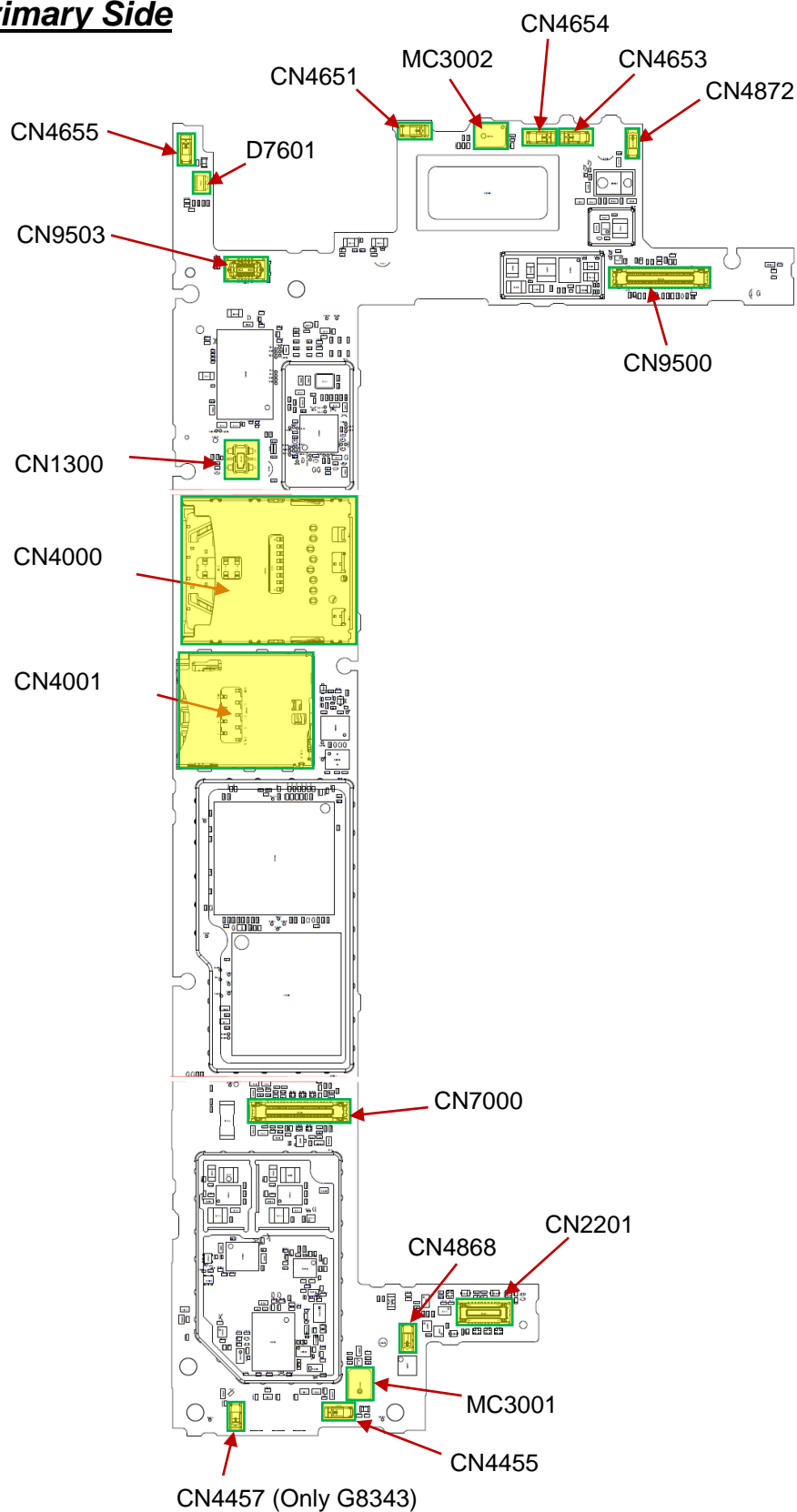
7. Flux



Refer to the 1003-9107 Tools Catalogue (RE4251) for detail of standard tools.

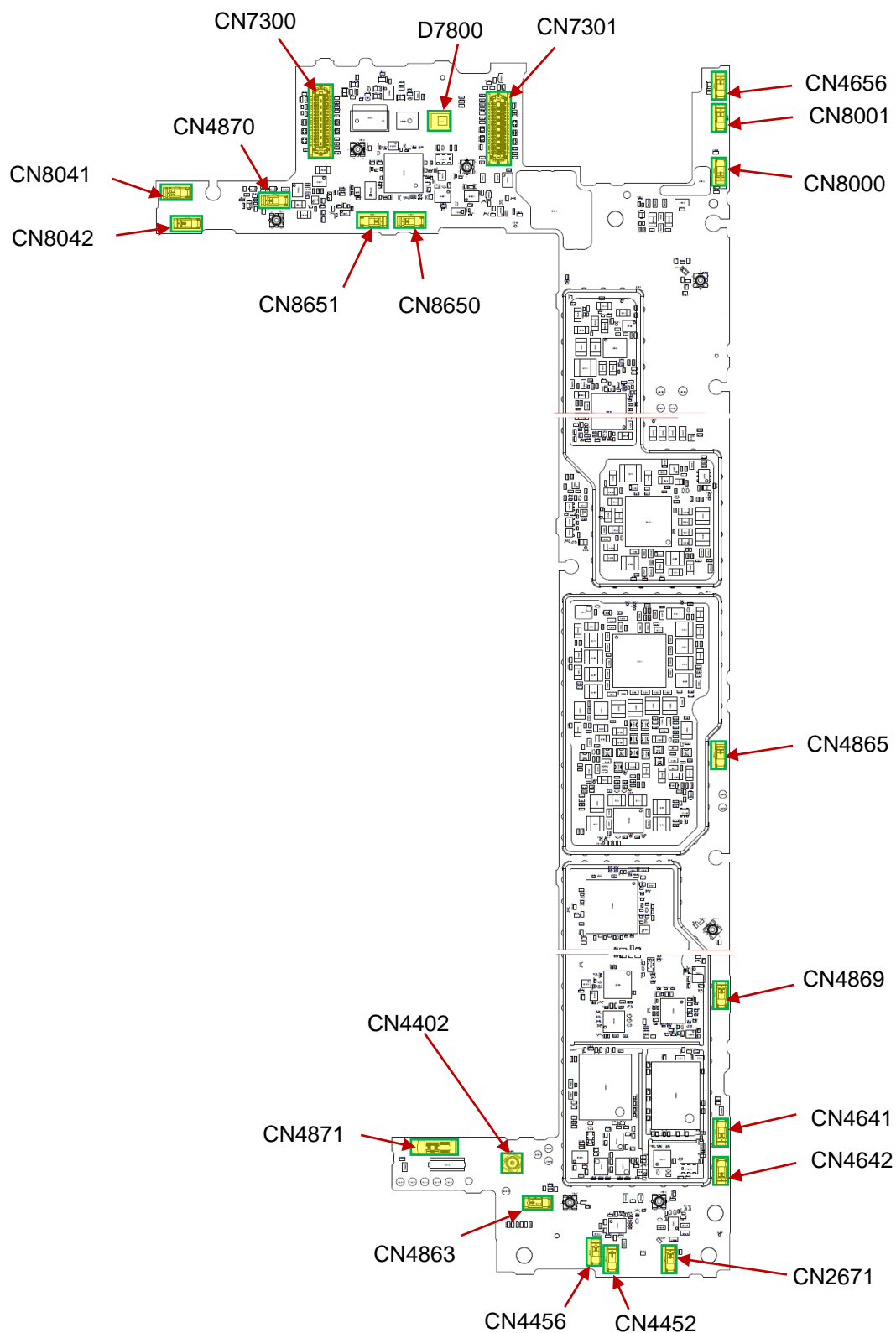
3 Component Placing

Primary Side



Component Placing

Secondary Side

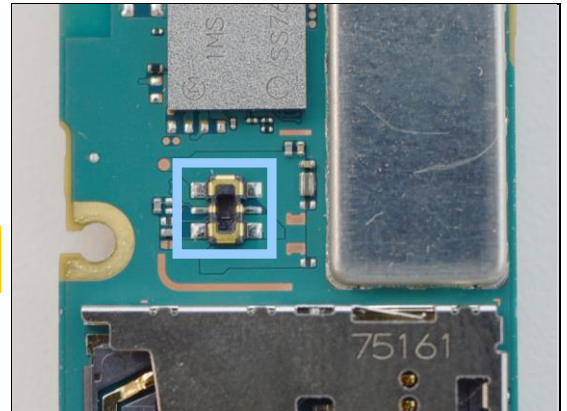


4 Additional Repair Info

Primary Side 1

CN1300

Replace if mechanically damaged. (Cannot power on / charge), No second SIM card is detected)



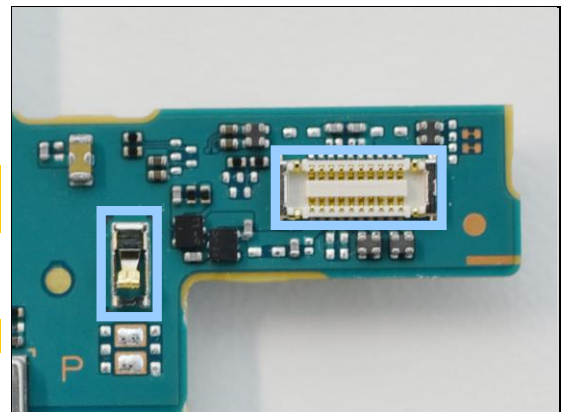
Primary Side 2

CN2201

Replace if mechanically damaged. (Cannot charge, No data connection)

CN4868

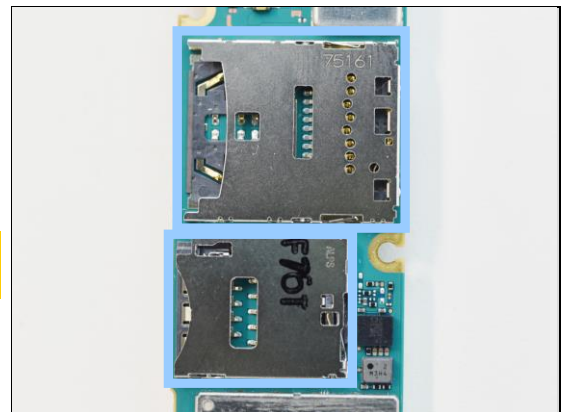
Replace if mechanically damaged. (No or bad network).



Primary Side 3

CN4000, CN4001

Replace if mechanically damaged (No SIM/SD detection, Restart).



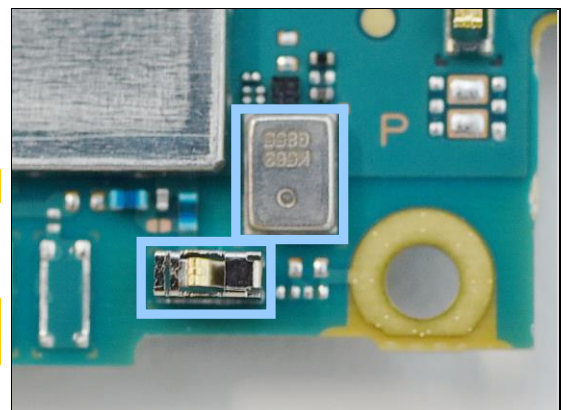
Primary Side 4

CN4455

Replace if mechanically damaged (No or bad network).

MC3001

Replace if mechanically damaged. (Primary mic problem)



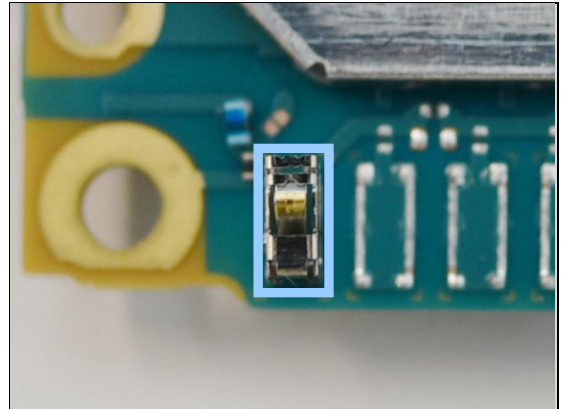
Additional Repair Info

Primary Side 5

CN4457

Replace if mechanically damaged. (No or bad network)

Only G8343



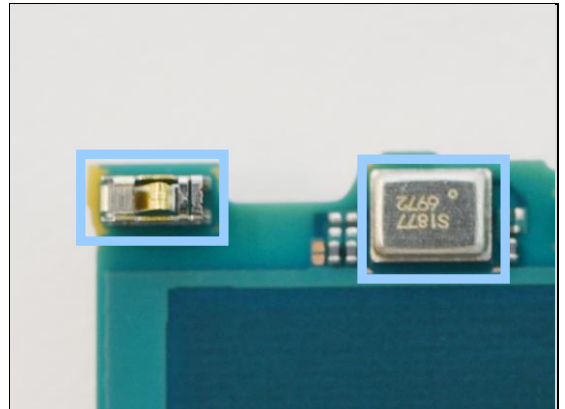
Primary Side 6

CN4651

Replace if mechanically damaged. (No or bad network)

MC3002

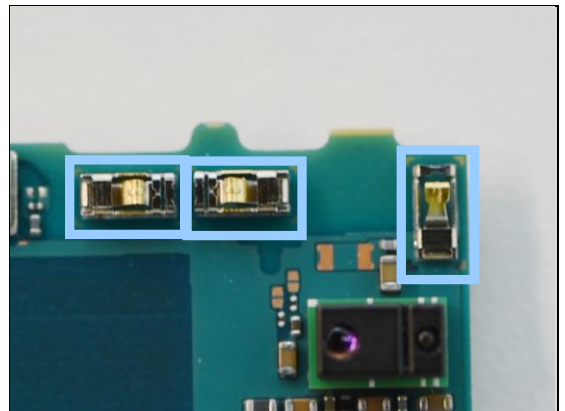
Replace if mechanically damaged. (Secondary mic problem)



Primary Side 7

CN4653, CN4654, CN4872

Replace if mechanically damaged. (No or bad network)



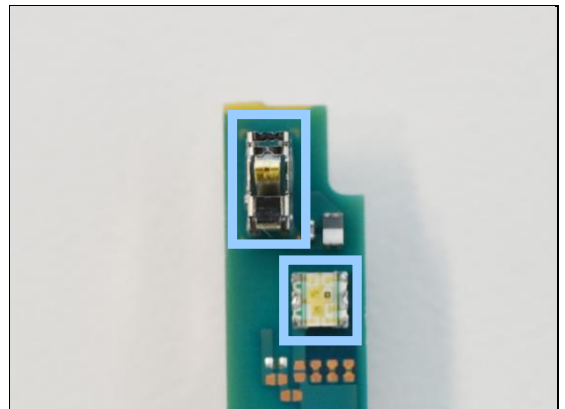
Primary Side 8

CN4655

Replace if mechanically damaged. (No or bad network)

D7601

Replace if mechanically damaged. (LED indicator does not work).

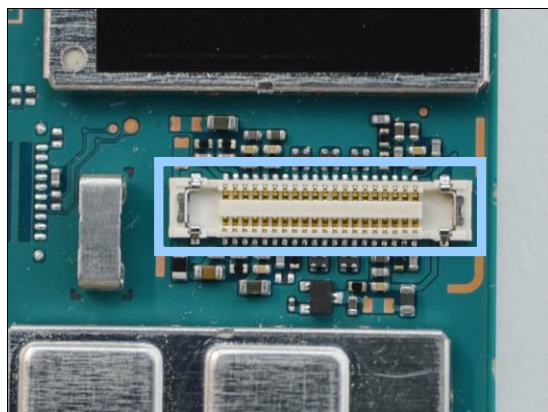


Additional Repair Info

Primary Side 9

CN7000

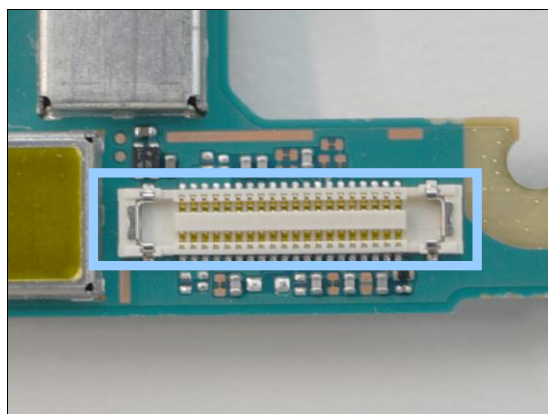
Replace if mechanically damaged. (Display/Touch problem)



Primary Side 10

CN9500

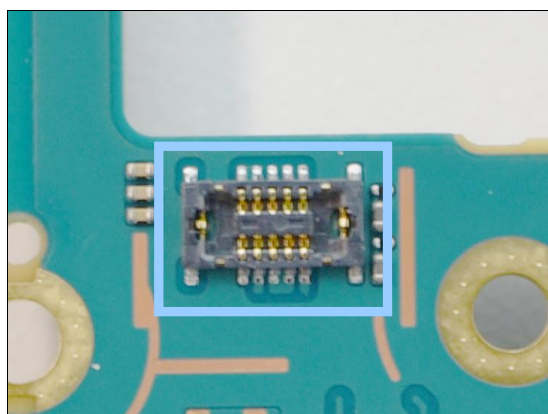
Replace if mechanically damaged. (Key/Finger Print/Vibrator/Compass/Bottom speaker problem)



Primary Side 11

CN9503

Replace if mechanically damaged. (Audio jack problem)

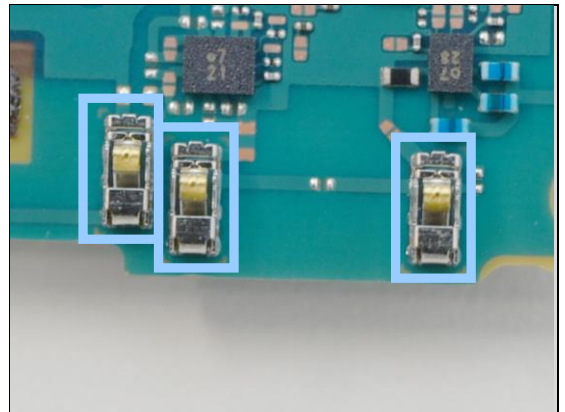


Additional Repair Info

Secondary Side 1

CN2671, CN4452, CN4456

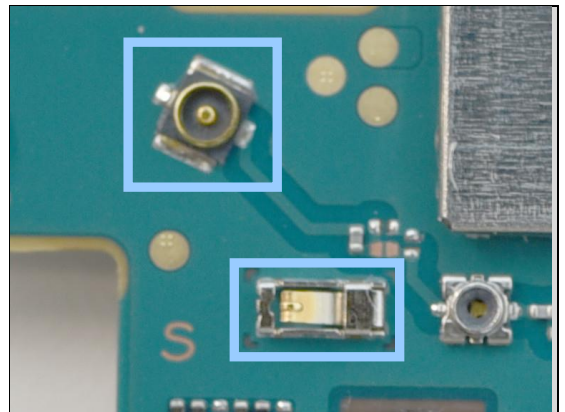
Replace if mechanically damaged. (No or bad network)



Secondary Side 2

CN4402, CN4863

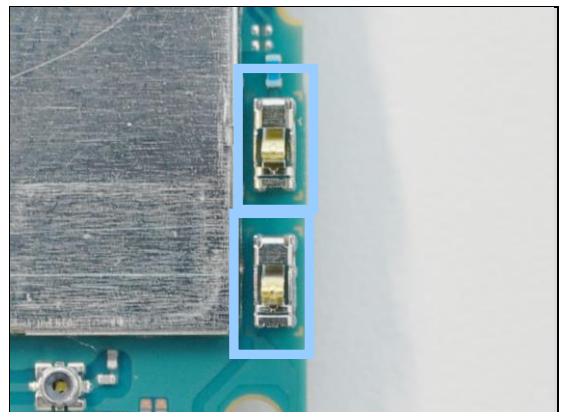
Replace if mechanically damaged. (No or bad network)



Secondary Side 3

CN4641, CN4642

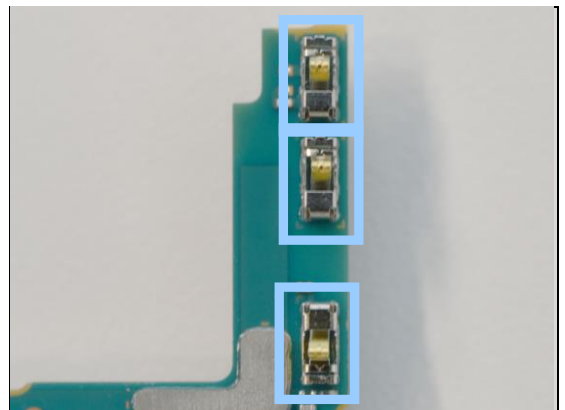
Replace if mechanically damaged. (No or bad network)



Secondary Side 4

CN4656, CN8000, CN8001

Replace if mechanically damaged. (No or bad network)

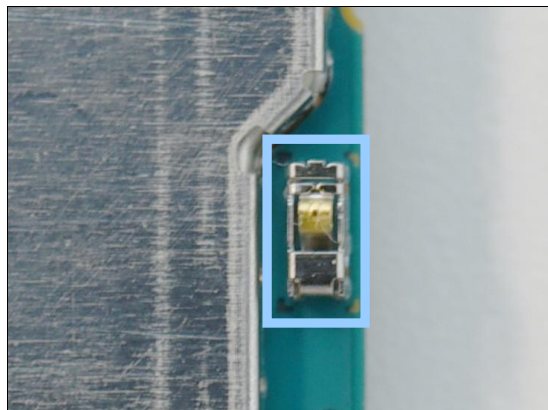


Additional Repair Info

Secondary Side 5

CN4865

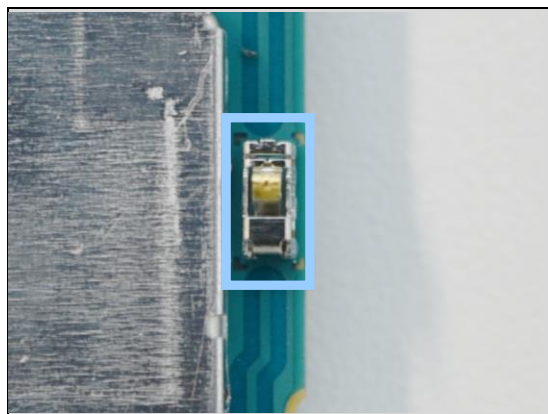
Replace if mechanically damaged. (No or bad network)



Secondary Side 6

CN4869

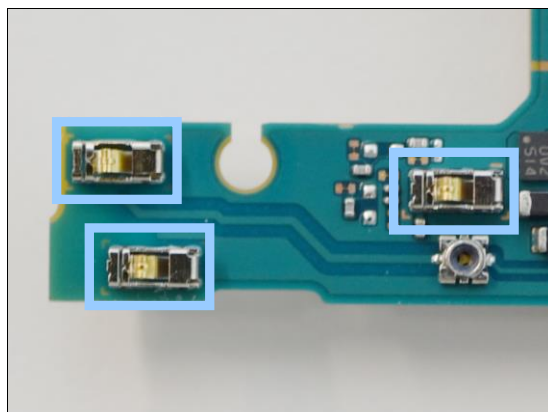
Replace if mechanically damaged. (No or bad network)



Secondary Side 7

CN4870, CN8041, CN8042

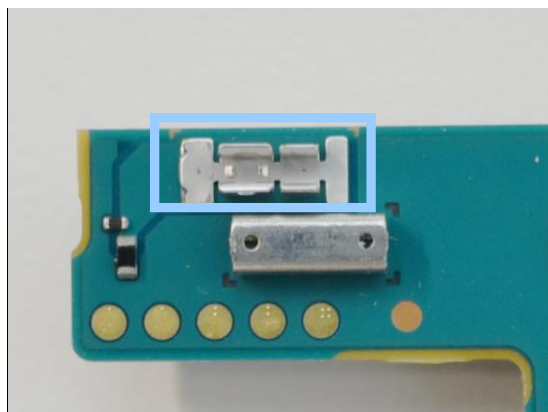
Replace if mechanically damaged. (No or bad network)



Secondary Side 8

CN4871

Replace if mechanically damaged.

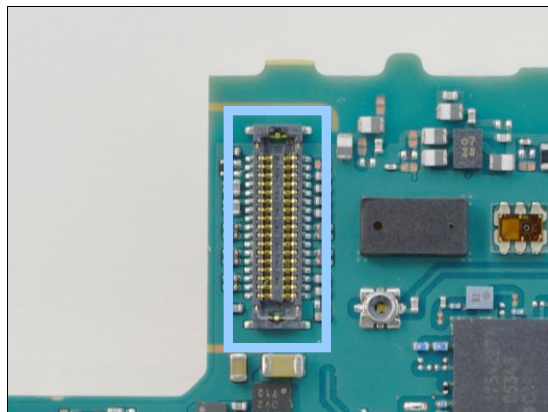


Additional Repair Info

Secondary Side 9

CN7300

Replace if mechanically damaged. (Main Camera problem)



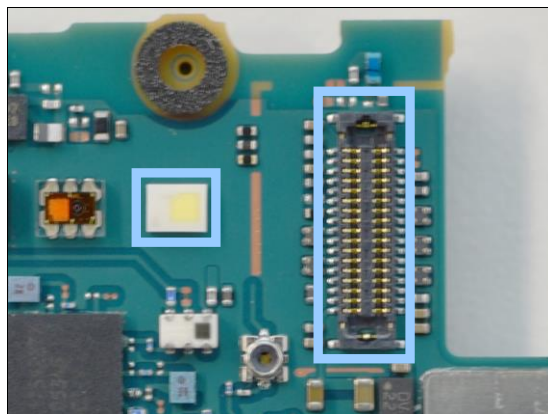
Secondary Side 10

CN7301

Replace if mechanically damaged. (Front Camera problem)

D7800

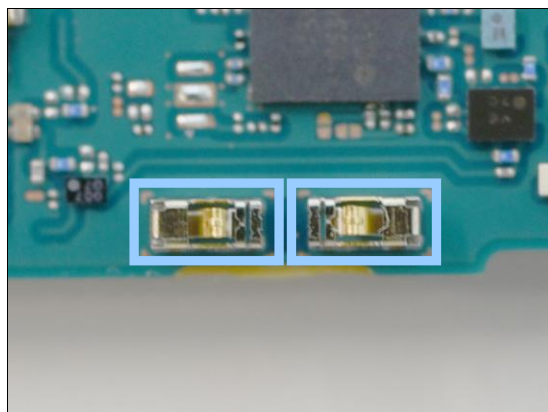
Replace if mechanically damaged. (Flash light does not work)



Secondary Side 11

CN8650, CN8651

Replace if mechanically damaged. (No or bad network)



5 Revision History

Rev.	Date	Changes/Comments
1	2017-08-25	Initial release
2	2017-09-01	Update cover image. Add marketing name.